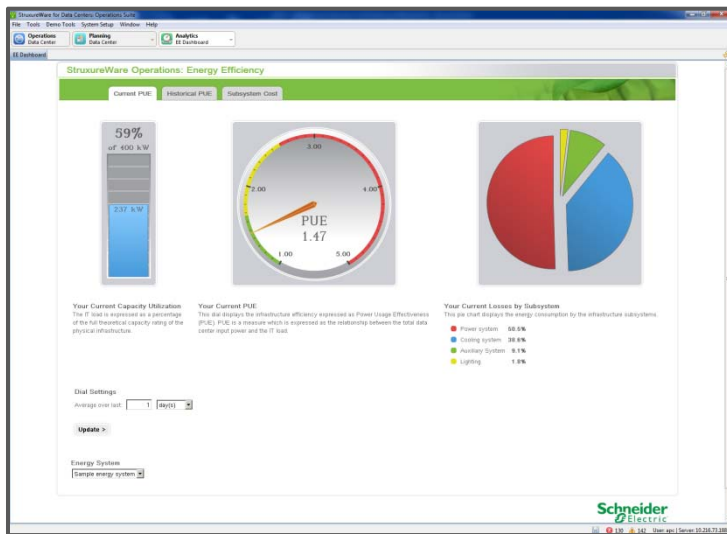




# Data Center Operation: Energy Efficiency

Intelligent PUE/DCiE analytics at subsystem level

Full insight into current and historical energy efficiency for facilities, identifying efficiency losses and enabling improved PUE/DCiE values at subsystem level



## Data Center Infrastructure Management Application for StruxureWare Data Center Operation

Data Center Operation: Energy Efficiency provides current and historical Power Usage Effectiveness (PUE) and Data Center Infrastructure Efficiency (DCiE) values, enabling a fact-based understanding of how much power is devoted to driving the installed IT equipment compared with the total facility consumption.

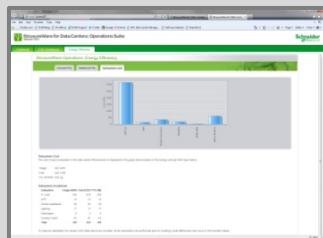
> It provides a detailed insight into how effectively energy is utilized down to subsystem level.

> Provides an understanding of how to improve energy efficiency. Subsystem data can either be measured or estimated, also allowing customers with few power meters to benefit from the application.

> The web-based dashboard view includes efficiency data on current and historical PUE/DCiE, as well as detailed subsystem cost analysis.

> Available via StruxureWare Data Center Operation, which enables integrations with StruxureWare Data Center Expert for monitoring purposes and 3<sup>rd</sup> party enterprise systems.

Provides insight into energy losses and cost of energy at subsystem level, providing details of which subsystem draws the most costs.



Carbon footprint - Shows the CO2 footprint for each energy sub-system, for instant measurement of impact on the environment.

# Features & Benefits

Energy Efficiency Analysis	Benefits
Energy efficiency analysis	Provides current and historical PUE/DCiE values based on the current IT-load for a fact-based understanding of energy efficiency at the facility level.
Subsystem losses	Provides insight into energy losses and cost of energy at subsystem level, providing details of which subsystem draws the most costs.
Carbon footprint	Shows the CO <sub>2</sub> footprint for each energy sub-system, for instant measurement of impact on the environment.
No measured data required	Utilizes measured or modeled data, allowing for usage with few or no power meters.
Power dependency editor	Provides an overview of the power path through the facility, including a hierarchical break-down of the power flow from where the power enters the building down to the main Power Distribution Unit (PDU).
Reporting Capabilities	Benefits
PUE/DCiE report	Provides a report on current & historical PUE/DCiE values, showing the effect of changing seasons and suitable for both internal and external display.
Live dashboard	Gain transparency to data center key performance indicators through easily configured web dashboards, displaying customizable management-level information.
Ease of use	Benefits
Web-enabled interface	Created for easy integration with 3rd party web page through an open platform.
Easy deployment	Reduced installation time and costs with a minimum number of power meters required for deployment
Integration	Benefits
Multi-vendor data integration	Enables integration with 3rd party enterprise and building management systems, such as StruxureWare Building Operation, for data gathering, customization and integration of PUE/DCiE calculations.

#### Prerequisite:

StruxureWare Data Center Operation

#### Product Module Options:

Data Center Operation: Capacity  
 Data Center Operation: Change  
 Data Center Operation: IT Optimize  
 Data Center Operation: Energy Efficiency  
 Data Center Operation: Energy Cost  
 Data Center Operation: Insight

#### Enhancement Options:

Data Center Operation: VIZOR  
 Data Center Operation: Mobile  
 Data Center Operation: Dashboard

#### Data Center Monitoring Option:

StruxureWare Data Center Expert

For further information, please visit:

[www.apc.com/software](http://www.apc.com/software)

Integrador en España: Software Greenhouse, S.A.



Figueres, 8  
 08022 Barcelona, Spain  
 Tel. +34 93 253 16 50  
[www.swgreenhouse.com](http://www.swgreenhouse.com)

