

Microsoft System Center Virtual Machine Manager PRO Pack for StruxureWare™ Data Center Operation



Microsoft Partner

Silver Independent Software Vendor (ISV)

Automatic Migration of Virtual Machines From Physical Host Servers Impacted By Power and Cooling Interruptions

The Schneider Electric Microsoft System Center Virtual Machine Manager PRO Pack for StruxureWare Data Center Operation combines information from the IT-layer and the physical infrastructure layer, enabling data center managers to automatically migrate their virtual machines from an impacted host server to a healthy host server.

Links Physical & Virtual Environments

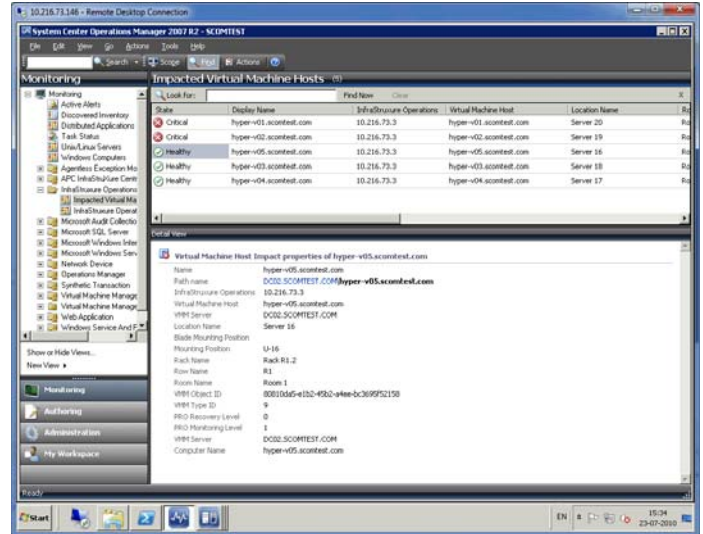
- Network managers can monitor their entire IT environment, including power, cooling, security and environmental data from Microsoft System Center Virtual Machine Manager, and receive notice of physical infrastructure events and their impact on the IT infrastructure.

Automated VM Migration

- Provides an automated response to physical infrastructure events, moving virtual machines from impacted host servers to healthy host servers for uninterrupted uptime.
- Enables data center operators to proactively simulate & identify how a physical device failure will impact business critical applications.

The Microsoft | Schneider Electric Partnership Mission

Microsoft and Schneider Electric collaborate to provide innovative solutions to demanding physical infrastructure requirements. The partnership combines a global leader in critical power and cooling solutions with the comprehensive enterprise management of Microsoft. Together, the team delivers resilient, energy-efficient, and cost effective solutions to support today's IT environments.



Microsoft's System Center Virtual Machine Manager is linked with the StruxureWare Data Center Operation PRO Pack assuring the protection and safe migration of virtual machines from impacted hosts.



Confidently Make Critical Business Decisions

with Schneider Electric Data Center Infrastructure Management

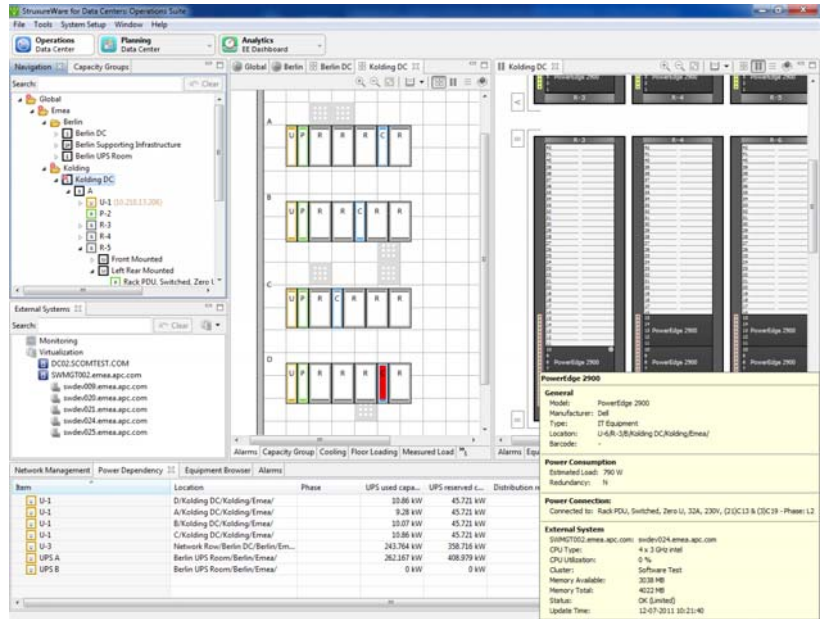
- > How do you move your virtual machines when a host server is impacted due to a power or cooling event?
- > How do you decide where to put your host server? How do you know if you have enough power and cooling?
- > If you have a power or cooling failure how do you know what business process (s) could be impacted?



Solution Components

Schneider Electric Data Center Infrastructure Management

- **StruxureWare Data Center Expert** - A scalable monitoring system which collects, organizes and distributes critical alerts, surveillance video and key information, in real time providing a unified view of complex physical infrastructure environments from anywhere on the network.
- **StruxureWare Data Center Operation** - provides the operations framework and management of data center physical infrastructure. The platform ties real-time device management of power, cooling and related physical infrastructure devices with the potential impact to physical servers hosting virtual machines.



Microsoft's System Center Virtual Machine Manager

- **Microsoft System Center Virtual Machine Manager (VMM)** is the end-to-end service management solution that centrally creates and manages virtual machines across the entire data center, and easily consolidates multiple physical servers onto virtual hosts. VMM includes capabilities such as planning, deploying, managing, and optimizing a virtual server infrastructure.

Microsoft System Center VMM PRO Pack for StruxureWare Data Center Operation provides data center managers with relevant virtual machine information on virtual hosts.

For further info visit

www.apc.com/software

Installation Requirements

- Schneider Electric's StruxureWare Data Center Expert Basic, Standard or Enterprise
- Schneider Electric's StruxureWare Data Center Operation
- Data Center Operation: Capacity
- Microsoft System Center Operations Manager 2007 and Microsoft System Center Virtual Machine Manager
- Schneider Electric's StruxureWare Data Center Operation Management PRO Pack for Microsoft System Center Virtual Machine Manager— available via **FREE** download



Integrador en España: Software Greenhouse, S.A.
Figueres, 8
08022 Barcelona, Spain
Tel. +34 93 253 16 50
www.swgreenhouse.com

