

# StruxureWare Data Center Expert

Infrastructure management from rack to row to room to building

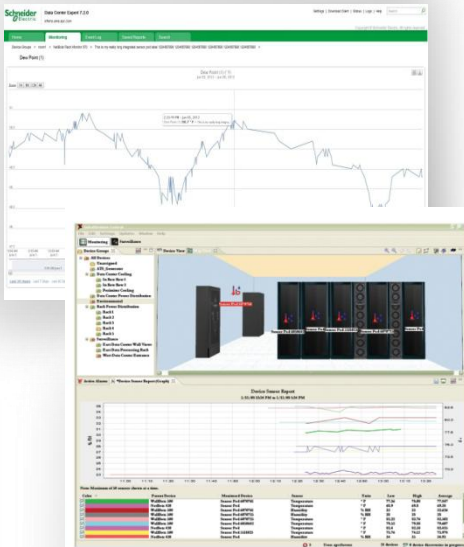


*Now offered as a virtual machine!*

## Centralized, multi-vendor, real-time monitoring of data center physical infrastructure

StruxureWare Data Center Expert is easy to use and deploy with a user-friendly interface to monitor, manage and control the hundreds or thousands of devices a company might have from a wide range of manufacturers. These devices include equipment that provides power, cooling, security and environmental monitoring.

- **Multi-vendor** – capable of monitoring any networked device from any manufacturer
- **Real-time** monitoring, user-defined reports and graphs, and instant fault notification and escalation enable quick resolution of critical infrastructure events.
- **Centralized repository** – of critical information accessible by multiple users from anywhere on the network.
- **Future Trending** – bringing new insights into your infrastructure's health, planning and budgeting.
- **Customized Alarming** – alarm and escalate by device, by rack, by location to the right people at the right time.
- **Open and flexible architecture** – expands with changing business needs through additional device licenses, add-on surveillance, operations, capacity and change modules.
- **Full software developer kit (SDK)** – allows custom integration with other systems for maximum flexibility.



Deploy in minutes, manage from anywhere, analyze instantly, integrate with other management systems.

## Integrated with Power and Building Management

Integrate with Building Management Systems and PowerLogic ION-Enterprise for information on the health of critical support systems in the electrical and mechanical rooms as well as power quality and electrical distribution.

## Web Services API

Ready access to StruxureWare Data Center Expert alerts, data, reports and trending through existing dashboards – or create custom portals for financial, operational or other views.

# StruxureWare Data Center Expert

Specifications	Basic	Standard	Enterprise	Virtual Machine	
SKU	AP9465	AP9470	AP9475	AP94VMTRL	AP94VMACT
Device Support (1 node = 1 IP address)	Up to 525 devices	Up to 2,025 devices	Up to 4,025 devices	Up to 5 devices	Up to 325 devices with (1) CPU and (1) GB RAM Up to 1,025 devices with (1) CPU and (2) GB RAM Up to 2,025 devices with (2) CPU and (2) GB RAM Up to 4,025 devices with (4) CPU and (4) GB RAM
NetBotz Appliance Surveillance Support	Up to 15 appliances	Up to 125 appliances	Up to 250 appliances	Up to 1 appliance	Up to 250 appliances
StruxureWare Operations	Up to 20 racks	Up to 200 racks	Up to 1,000 racks (2,500 nodes)	Up to 1,000 racks (2,500 nodes)	
StruxureWare™ Data Center Capacity					
StruxureWare™ Mobile					
StruxureWare™ Energy Efficiency					
StruxureWare™ Data Center Change					
StruxureWare™ Data Center Energy Cost					
Building Management System Integration	Yes	Yes	Yes	Yes	
Multi-vendor SNMP and ModBus Support	Yes	Yes	Yes	Yes	
Power	Single supply	Single supply	Dual supply	n/a	
<b>Supported Device Types</b>					
All: UPS Models, Chillers, Power Distribution Units (PDU), Rack PDUs, Computer Room Air Conditioners, Environmental Sensors, Power Metering Equipment, Surveillance Appliances, Static Transfer Switches, Standby Generators	Yes	Yes	Yes	Yes	
<b>Client System &amp; Web Browser Prerequisites</b>					
Operating System	Microsoft® Windows® XP (SP1, SP2, SP3) Windows® Server 2003 (SP2) Windows® Vista, Windows® 7, or Red Hat® Enterprise, Linux® 6.0 (32-bit platforms only)	Microsoft® Windows® XP (SP1, SP2, SP3) Windows® Server 2003 (SP2) Windows® Vista, Windows® 7, or Red Hat® Enterprise, Linux® 6.0 (32-bit platforms only)	Microsoft® Windows® XP (SP1, SP2, SP3) Windows® Server 2003 (SP2) Windows® Vista, Windows® 7, or Red Hat® Enterprise, Linux® 6.0 (32-bit platforms only)	Microsoft® Windows® XP (SP1, SP2, SP3) Windows® Server 2003 (SP2) Windows® Vista, Windows® 7, or Red Hat® Enterprise, Linux® 6.0 (32-bit platforms only)	
CPU Speed	1 GHz or better AMD/Intel processor	1 GHz or better AMD/Intel processor	1 GHz or better AMD/Intel processor	1 GHz or better AMD/Intel processor	
System Memory	1GB RAM	1GB RAM	1GB RAM	1GB RAM	
Screen Resolution	1024 x 768	1024 x 768	1024 x 768	1024 x 768	
Browser Requirements	The browser must be JavaScript® enabled, MozillaFirefox® version 12.0, 13.0, 14.0 Microsoft Internet Explorer® version 8.0, 9.0, 10.0 Google Chrome™ version 19.0, 20.0, 21.0	The browser must be JavaScript® enabled, MozillaFirefox® version 12.0, 13.0, 14.0 Microsoft Internet Explorer® version 8.0, 9.0, 10.0 Google Chrome™ version 19.0, 20.0, 21.0	The browser must be JavaScript® enabled, MozillaFirefox® version 12.0, 13.0, 14.0 Microsoft Internet Explorer® version 8.0, 9.0, 10.0 Google Chrome™ version 19.0, 20.0, 21.0	The browser must be JavaScript® enabled, MozillaFirefox® version 12.0, 13.0, 14.0 Microsoft Internet Explorer® version 8.0, 9.0, 10.0 Google Chrome™ version 19.0, 20.0, 21.0	
<b>Communications &amp; Storage</b>					
On-board RAM	2GB	2GB	4GB	See "Supports VMware® Fault Tolerance" / "High Availability"	
Data Storage	160GB available for data storage	250GB available for data storage	1TB available for data storage	18GB minimum (includes required space for VM image and 1GB of data storage)	
Supports VMware® Fault Tolerance	n/a	n/a	n/a	(1) CPU, (1) GB RAM, up to 325 devices (1) CPU, (2) GB RAM, up to 1,025 devices	
Supports VMware® High Availability	n/a	n/a	n/a	(1) CPU, (1) GB RAM, up to 325 devices (1) CPU, (2) GB RAM, up to 1,025 devices (2) CPU, (2) GB RAM, up to 2,025 devices (4) CPU, (4) GB RAM, up to 4,025 devices	
Protocols	DNS, HTTP, HTTPS, SMS, SMTP, SSL, TCP/IP, SNMP.	DNS, HTTP, HTTPS, SMS, SMTP, SSL, TCP/IP, SNMP.	DNS, HTTP, HTTPS, SMS, SMTP, SSL, TCP/IP, SNMP.	DNS, HTTP, HTTPS, SMS, SMTP, SSL, TCP/IP, SNMP, Modbus TCP	
Network Interface Connections	RJ-45 10/100/1000 Base-T	RJ-45 10/100/1000 Base-T	RJ-45 10/100/1000 Base-T	RJ-45 10/100/1000 Base-T	

Integrador en España: Software Greenhouse, S.A.  
 Figueres, 8  
 08022 Barcelona, Spain  
 Tel. +34 93 253 16 50  
 www.swgreenhouse.com

