

VMware vSphere™ Integration for StruxureWare™ Data Center Operation



Automatic Migration of Virtual Machines From Physical Host Servers Impacted By Power and Cooling Interruptions

The Schneider Electric VMware vSphere Integration for StruxureWare Data Center Operation combines information from the IT-layer and the physical infrastructure layer, enabling data center managers to automatically migrate their virtual machines from an impacted host server to a healthy host server.

Links Physical & Virtual Environments

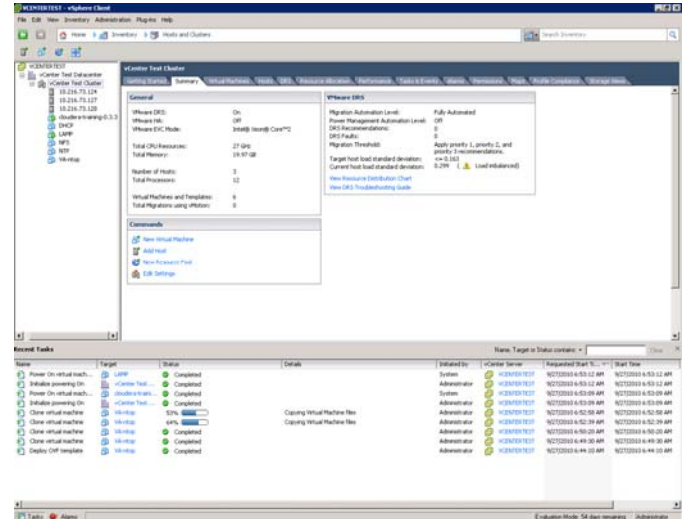
• Network managers can monitor their entire IT environment, including power, cooling, security, and environmental data from VMware vSphere, and receive notice of physical infrastructure events and their impact on the IT infrastructure.

Automated VM Migration

- Provides an automated response to physical infrastructure events, moving virtual machines from impacted host servers to constant healthy host servers for uninterrupted uptime and availability.
- Enables data center operators to proactively simulate & identify how a physical device failure will impact business critical applications.
- Ensures business continuity and prevents data loss due to IT capabilities such as automated failover, zero downtime maintenance, and virtual machine fault tolerance.

The VMware | Schneider Electric Partnership Mission

VMware and Schneider Electric collaborate to provide innovative solutions to demanding physical infrastructure requirements. The relationship leverages the expertise of the global leader in critical power and cooling services and the global leader in virtualization and cloud infrastructure to enable more agile, and efficient data center operations. Schneider Electric is a member of VMware's Technology Alliance Partner program.



VMware vSphere is integrated with StruxureWare Data Center Operation assuring the protection and safe migration of virtual machines to healthy hosts.



Confidently Make Critical Business Decisions

with Schneider Electric Data Center Infrastructure Management (DCIM)

- > How do you move your virtual machines when a host server is impacted due to a power or cooling event?
- > How do you decide where to put your host server? How do you know if you have enough power and cooling?
- > If you have a power or cooling failure how do you know what business process (s) could be impacted?



Solution Components

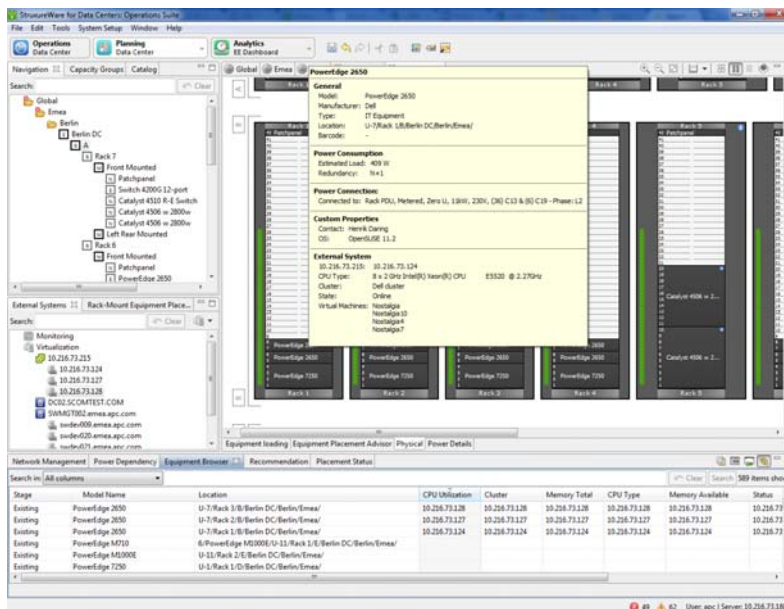
Schneider Electric's Data Center Infrastructure Management Offer

• **StruxureWare Data Center Expert** - a scalable monitoring system which collects, organizes and distributes critical alerts, surveillance video and key information, in real time providing a unified view of complex physical infrastructure environments from anywhere on the network.

• **StruxureWare Data Center Operation** - provides the operations framework and management of data center physical infrastructure. The platform ties real-time device management of power, cooling and related physical infrastructure devices with the potential impact to physical servers hosting virtual machines.

VMware vSphere

• **VMware vSphere** - a scalable virtualization platform that enables optimization of existing IT assets through easy consolidation of multiple virtual machines on physical hosts. VMware vSphere provides a complete infrastructure with solutions that improves and extends storage, networking security, and management capabilities.



The VMware vSphere Integration for StruxureWare Data Center Operation provides data center managers with relevant virtual machine information on virtual hosts.

For further info visit

www.apc.com/software

Installation Requirements

- Schneider Electric's StruxureWare Data Center Expert
- Schneider Electric's StruxureWare Data Center Operation
- Schneider Electric's Data Center Operation: Capacity
- VMware vSphere
- The integration between StruxureWare Data Center Operation and VMware vSphere is available for **FREE** through Data Center Operation: Capacity or Data Center Operation: IT Optimize.



Integrador en España: Software Greenhouse, S.A.
Figueres, 8
08022 Barcelona, Spain
Tel. +34 93 253 16 50
www.swgreenhouse.com

